

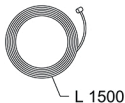
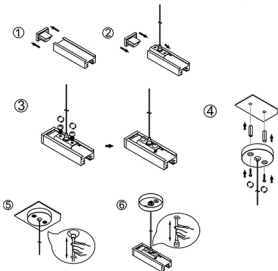
ENGLISH IP20

Specification of installation

In order to ensure safety use, please notice the following items:

- Read and understand the whole Specification.
- Suitable for the use of 220-240V and 50-60Hz.
- Must be installed on the fixed places and be checked annually
- Please wear gloves as instalment and avoid rot on the surface of plating.
- **Please turn off** the lighting source by soft cloth as cleaning prohibited to use of rotted detergent.
- Please connect with the local sales service center when there are any abnormality.

FIXTURE SIZE:



1. Uninstall the track end cap
2. Install the hanging board and end cap
3. Install the screw
4. Fixed the ceiling panel
- 5&6. Adjust the wire

Product coding: CLT 0.210 03